

The Scottish Rite Masons in the Northern Jurisdiction have many philanthropic commitments that make differences in the lives of individuals, families, and communities. In 1994, the Scottish Rite Masons in the Northern Jurisdiction opened the first Children's Dyslexia Center (formerly called the 32° Masonic Learning Centers for Children). Since 1994, this charity has become a national leader in the effort to help children and their families deal with the challenges presented by dyslexia.

The Mission has three components:

- To provide the highest quality, state-of-the-art, multisensory tutorial reading and written language instruction to children with dyslexia.
- To train tutors in the art, science and practice of tutoring children using the Orton-Gillingham approach to multisensory teaching of reading, spelling and writing.
- Advance the body of scientific knowledge of dyslexia through support of clinical research, to improve today's standards and tomorrow's care.

Our Centers have tutored over 14,000 children in our multisensory structured language (Orton-Gillingham based) program. Our training courses are accredited by the International Multisensory Structured Language Education Council (IMSLEC®) and we have certified over 3600 tutors. Our program has provided data for and/or participated in several scientific research projects.

Centers are located in Connecticut, Illinois, Indiana, Maine, Massachusetts, Michigan, New Hampshire, New Jersey, New York, Ohio, Pennsylvania, Rhode Island, and Wisconsin. For more information about Center locations, please go to our website at <http://childrensdyslexiacenters.org>

Formal standardized tests used:

- *Woodcock Reading Mastery Tests (WRMT-III)*
 - Word Attack (WA): Measures the child's ability to apply phonological and structural analysis skills to read nonsense words.
 - Word Identification (WI): Measures the child's ability to read words of increasing difficulty.
 - Passage Comprehension (PC): Measures the child's ability to study a short sentence or passage and use a variety of comprehension and vocabulary skills to identify a missing word.
- *Test of Written Spelling (TWS-5)*: Measures the child's ability to spell words which increase in level of difficulty and complexity.
- *Test of Word Reading Efficiency (TOWRE-2)*
 - Sight Word Efficiency (SWE): Measures the child's ability to pronounce real words accurately and fluently. Children read from a list which increases in level of difficulty and complexity for 45 seconds.

The Children's Dyslexia Centers Inc. is a tax-exempt 501(C)(3) charitable organization.





- Phonemic Decoding Efficiency (PDE): Measures the child's ability to pronounce nonsense words accurately and fluently. Children read from a list which increases in level of difficulty and complexity for 45 seconds.
- Total Word Reading Efficiency (TWRE): This is a combined score of the child's ability to read real word and apply decoding strategies to nonsense words accurately and fluently.
- *Comprehensive Test of Phonological Processing (CTOPP-2)*
 - Phonological Awareness Composite (PA): This score is comprised of three subtests, measuring the child's ability to say a word and then say what is left after dropping out designated sounds; to combine sounds to form words; and to identify target sounds in words.
 - Rapid Naming Composite (RN): This score is comprised of two subtests, measuring child's speed at naming the numbers and at naming the letters.

The data mining and statistical analysis of the data was completed using Statistica[®] software. All numerical data used in this progress summary is the result of the statistical analysis completed by the Statistica[®] software. The resulting numbers calculated by Statistica[®] software were rounded to the nearest tenth. The results are presented using Standard Scores where the mean score is 100 and the standard deviation is 15. Standard Scores indicate a person's achievement in relation to the average achievement for his/her age group, and, if a person's achievement growth is at the same pace as the group's average growth, the standard score remains relatively stable. Therefore, higher standard scores at the time of the posttest indicate accelerated growth. An increase of five Standard Score points is considered to demonstrate clinically significant growth.

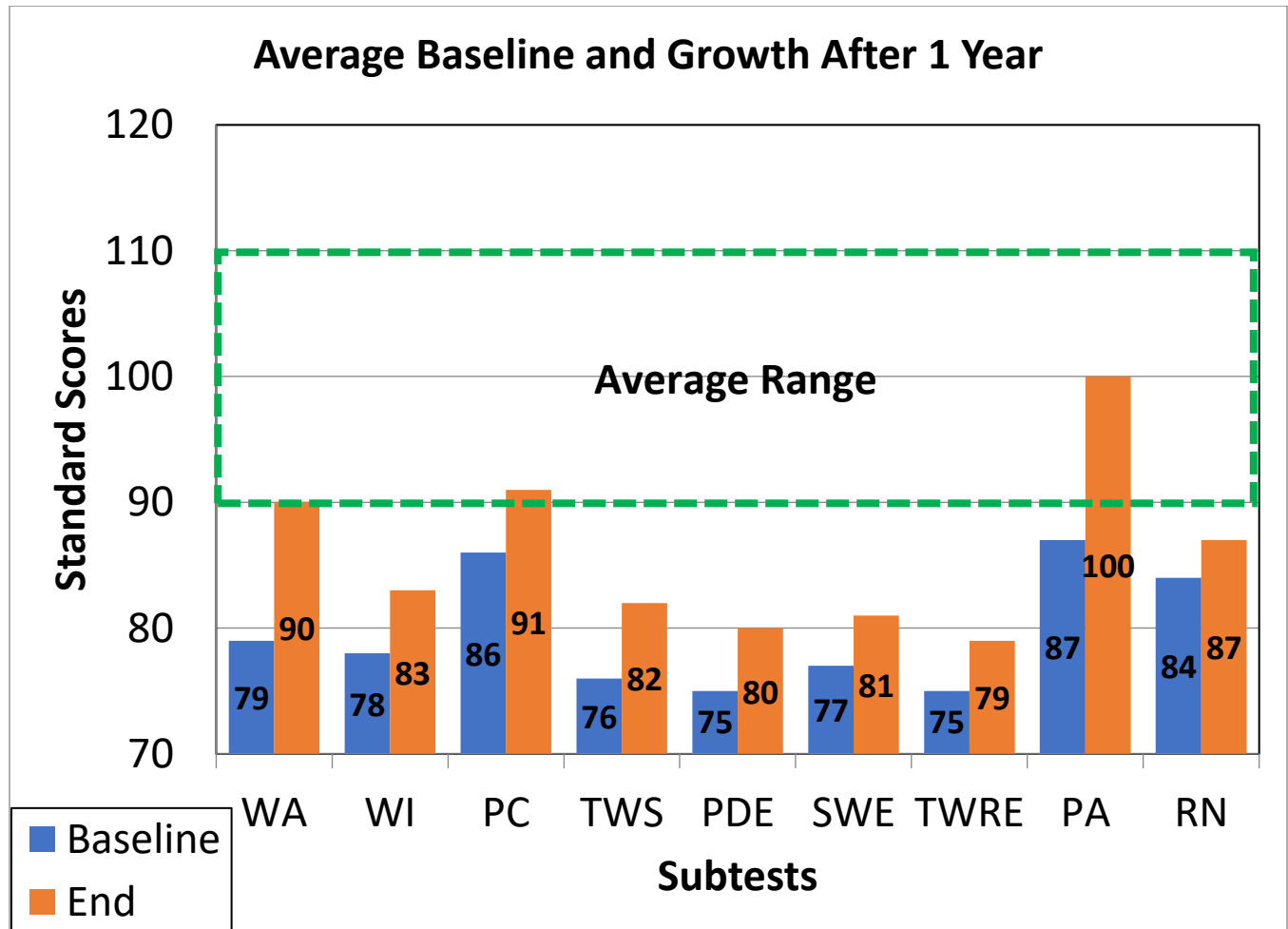
The Children's Dyslexia Centers Inc. is a tax-exempt 501(C)(3) charitable organization.





All Children's Dyslexia Centers Progress Summary for 2018 - 2019

This report provides a basic summary of the average progress made by 396 children attending a Children's Dyslexia Center between the dates of 9/1/2018 and 8/31/2019. The children all completed one year of one-on-one tutoring. Tutoring sessions are 55-60 minutes in length and the children attend two sessions per week. The children attended an average of 50 sessions. Baseline testing is completed one to two weeks prior to a child's first tutoring session and progress assessments are completed during each succeeding spring.



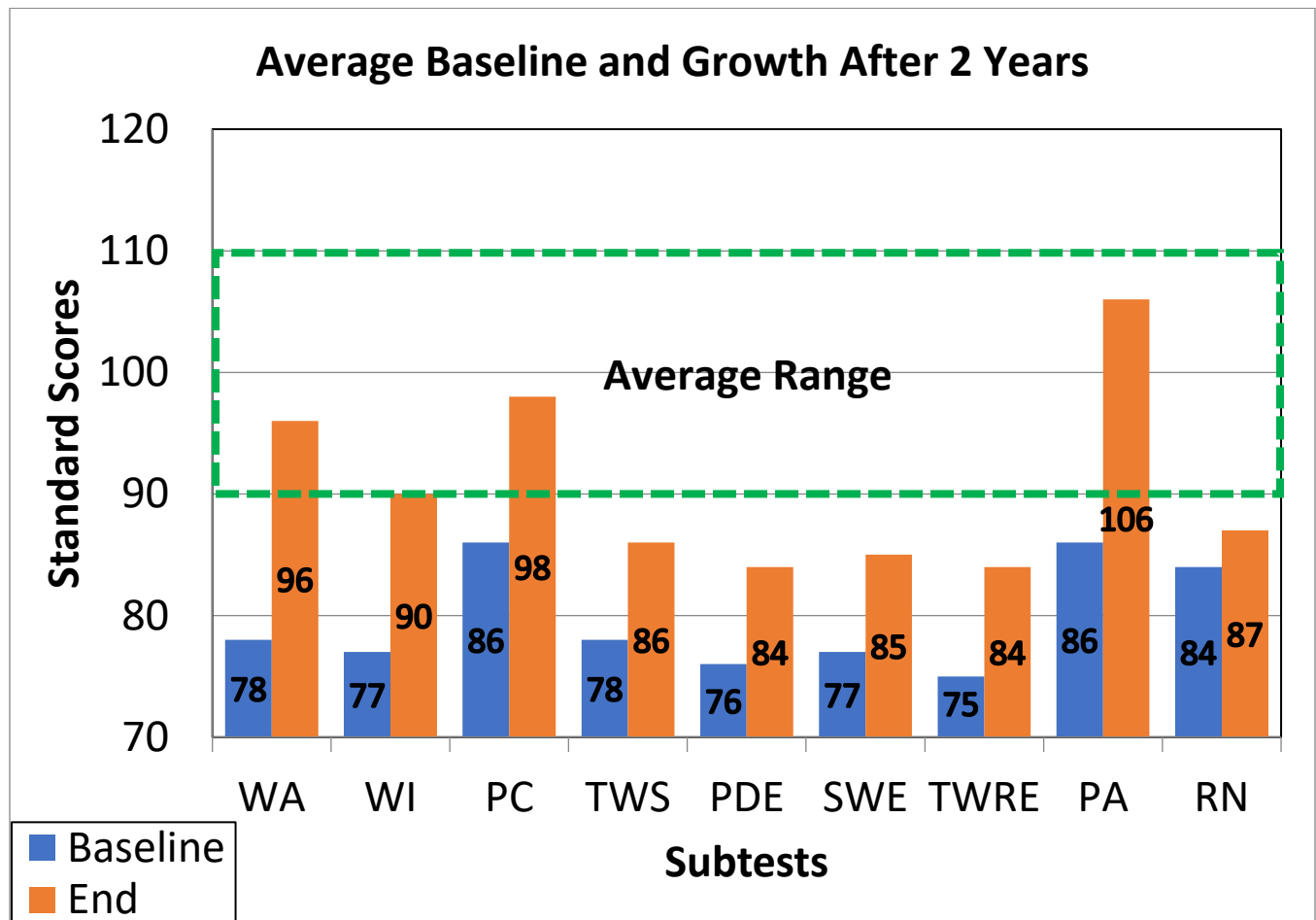
The Children's Dyslexia Centers Inc. is a tax-exempt 501(C)(3) charitable organization.





All Children's Dyslexia Centers Progress Summary for 2017 - 2019

This report provides a basic summary of the average progress made by 212 children attending a Children's Dyslexia Center between the dates of 9/1/2017 and 8/31/2019. The children all completed two years of one-on-one tutoring. Tutoring sessions are 55-60 minutes in length and the children attend two sessions per week. The children attended an average of 50 sessions the first year and 52 sessions the second year. Baseline testing is completed one to two weeks prior to a child's first tutoring session and progress assessments are completed during each succeeding spring.



The Children's Dyslexia Centers Inc. is a tax-exempt 501(C)(3) charitable organization.

